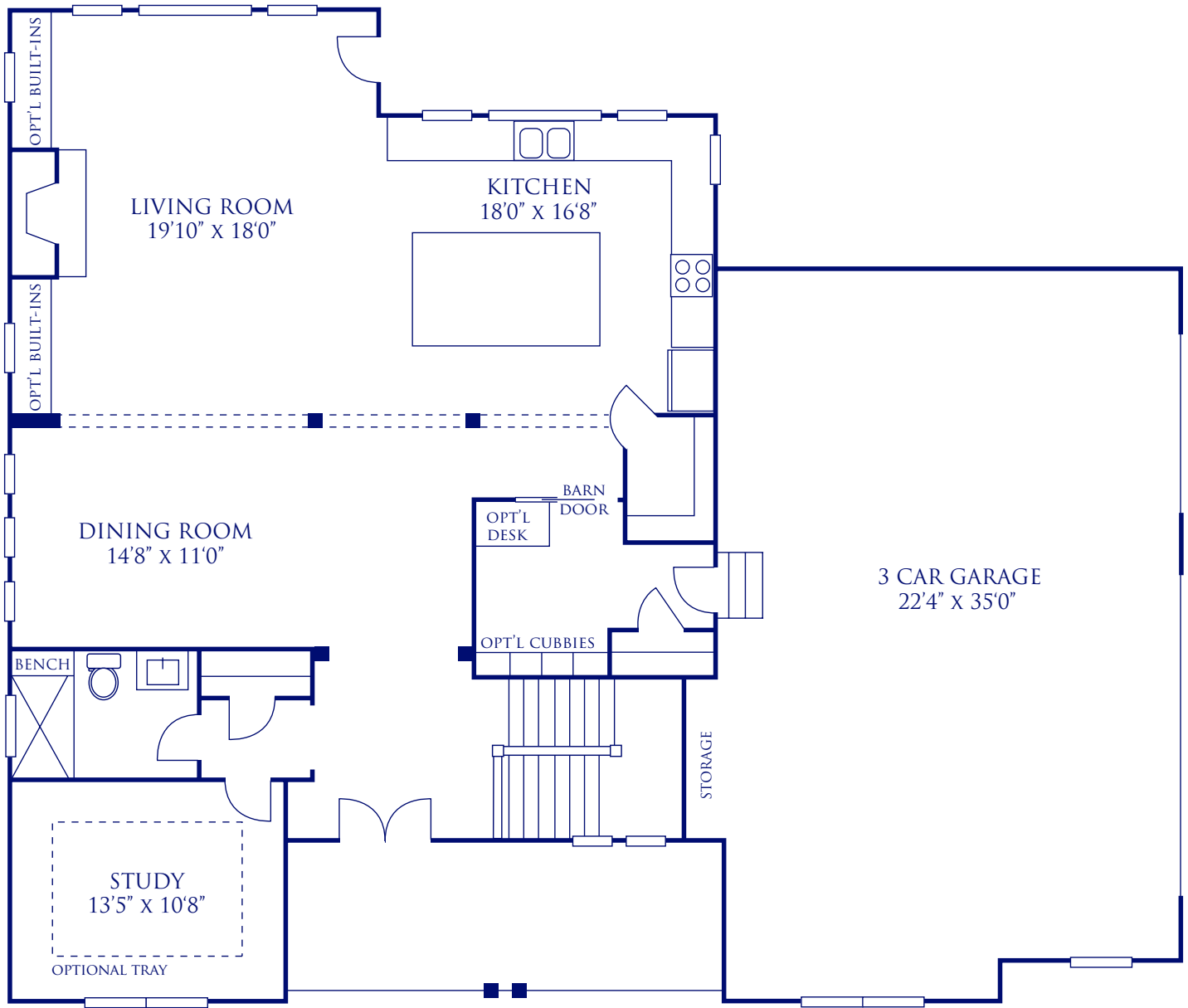




# THE CLIFDEN



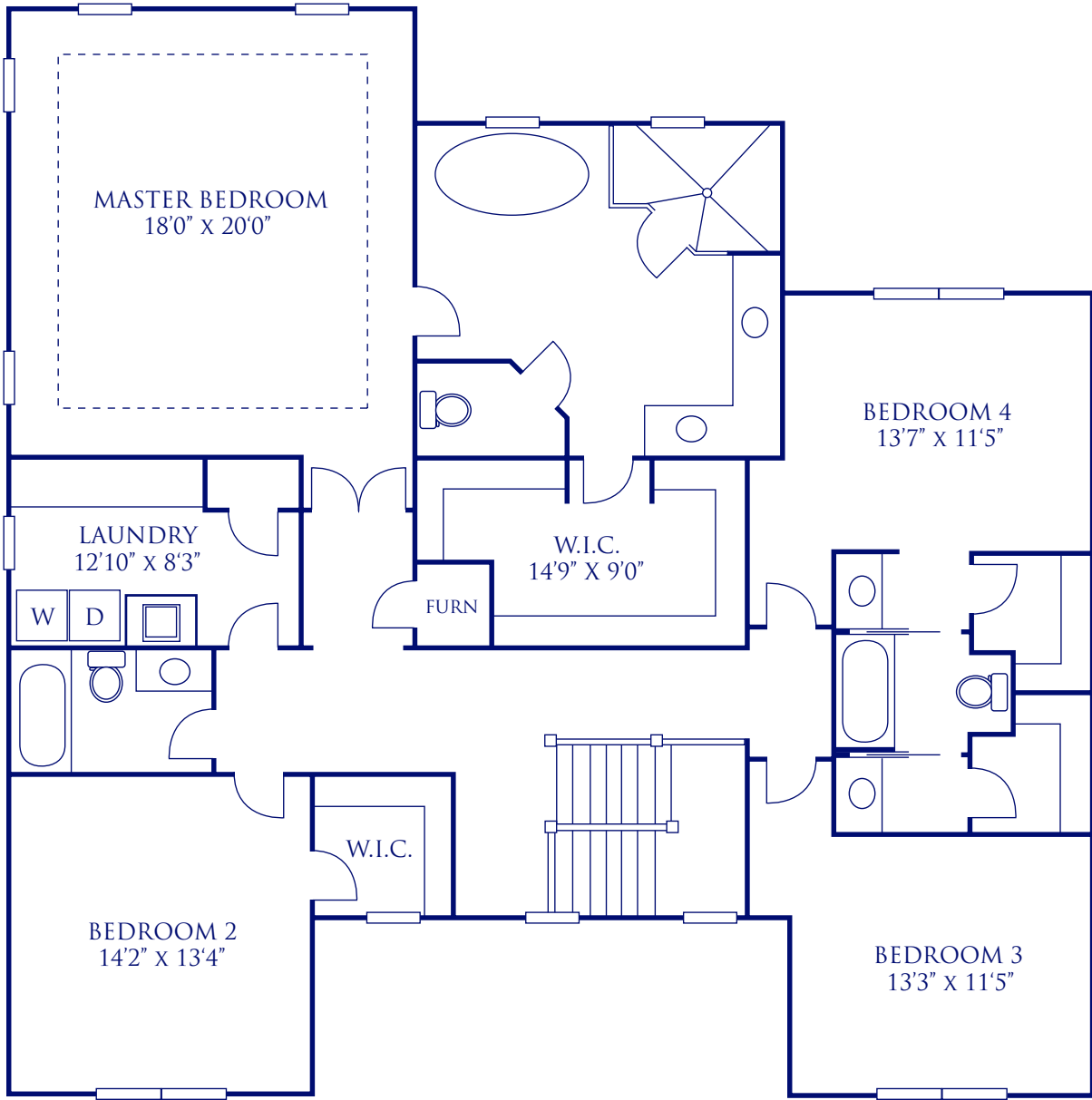
FIRST FLOOR

THE CLIFDEN



*This is for illustrative purposes only. All floorplans, exterior renderings and dimensions are approximate, not draw to scale, and are subject to change. All room sizes may vary due to elevation and siding/brick material selected. All room sizes may also include overlapping areas. All floor plans, exterior and standard features may vary per community and per evaluation and option selected. Please see your sales professional for specific details. Pendragon Homes LLC reserves the right to modify all plans and specifications without notice or obligation.*





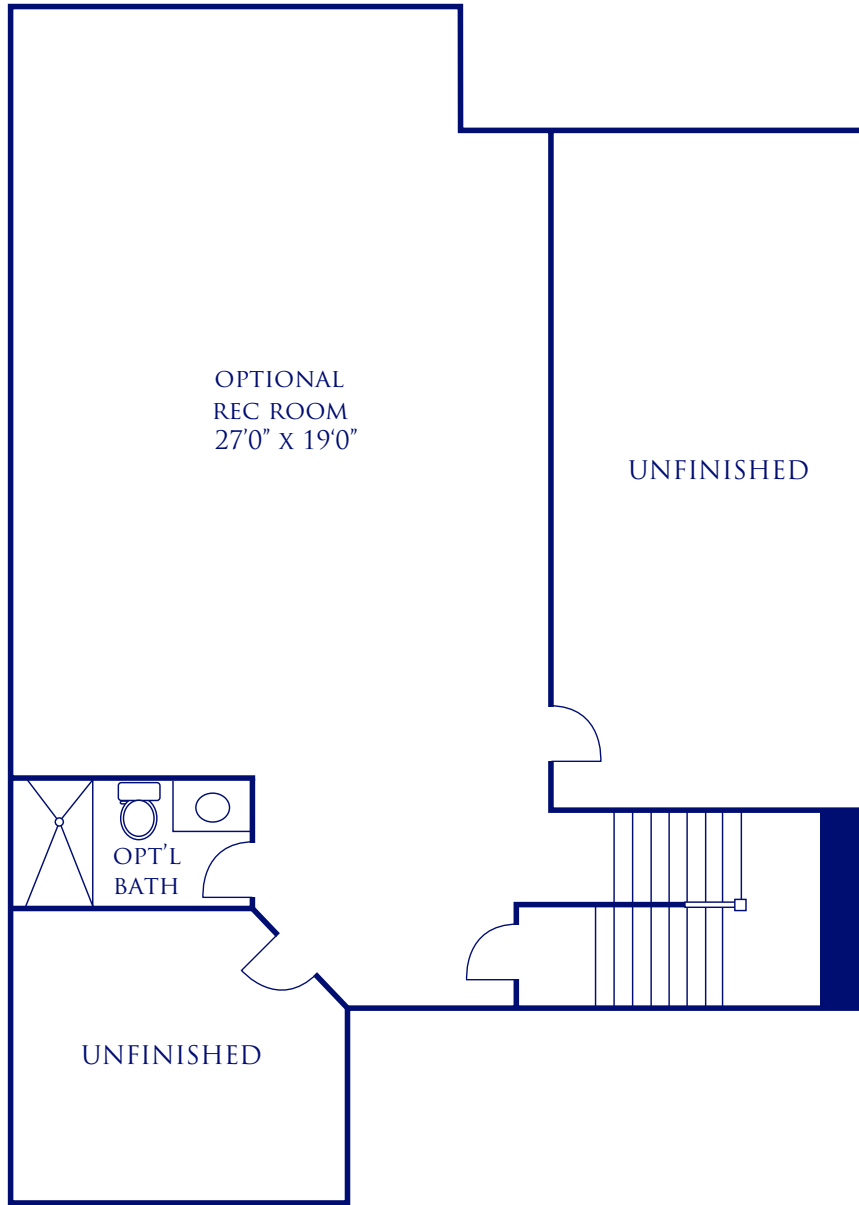
SECOND FLOOR

**THE CLIFDEN**



*This is for illustrative purposes only. All floorplans, exterior renderings and dimensions are approximate, not draw to scale, and are subject to change. All room sizes may vary due to elevation and siding/brick material selected. All room sizes may also include overlapping areas. All floor plans, exterior and standard features may vary per community and per evaluation and option selected. Please see your sales professional for specific details. Pendragon Homes LLC reserves the right to modify all plans and specifications without notice or obligation.*





LOWER LEVEL

THE CLIFDEN



*This is for illustrative purposes only. All floorplans, exterior renderings and dimensions are approximate, not draw to scale, and are subject to change. All room sizes may vary due to elevation and siding/brick material selected. All room sizes may also include overlapping areas. All floor plans, exterior and standard features may vary per community and per evaluation and option selected. Please see your sales professional for specific details. Pendragon Homes LLC reserves the right to modify all plans and specifications without notice or obligation.*

